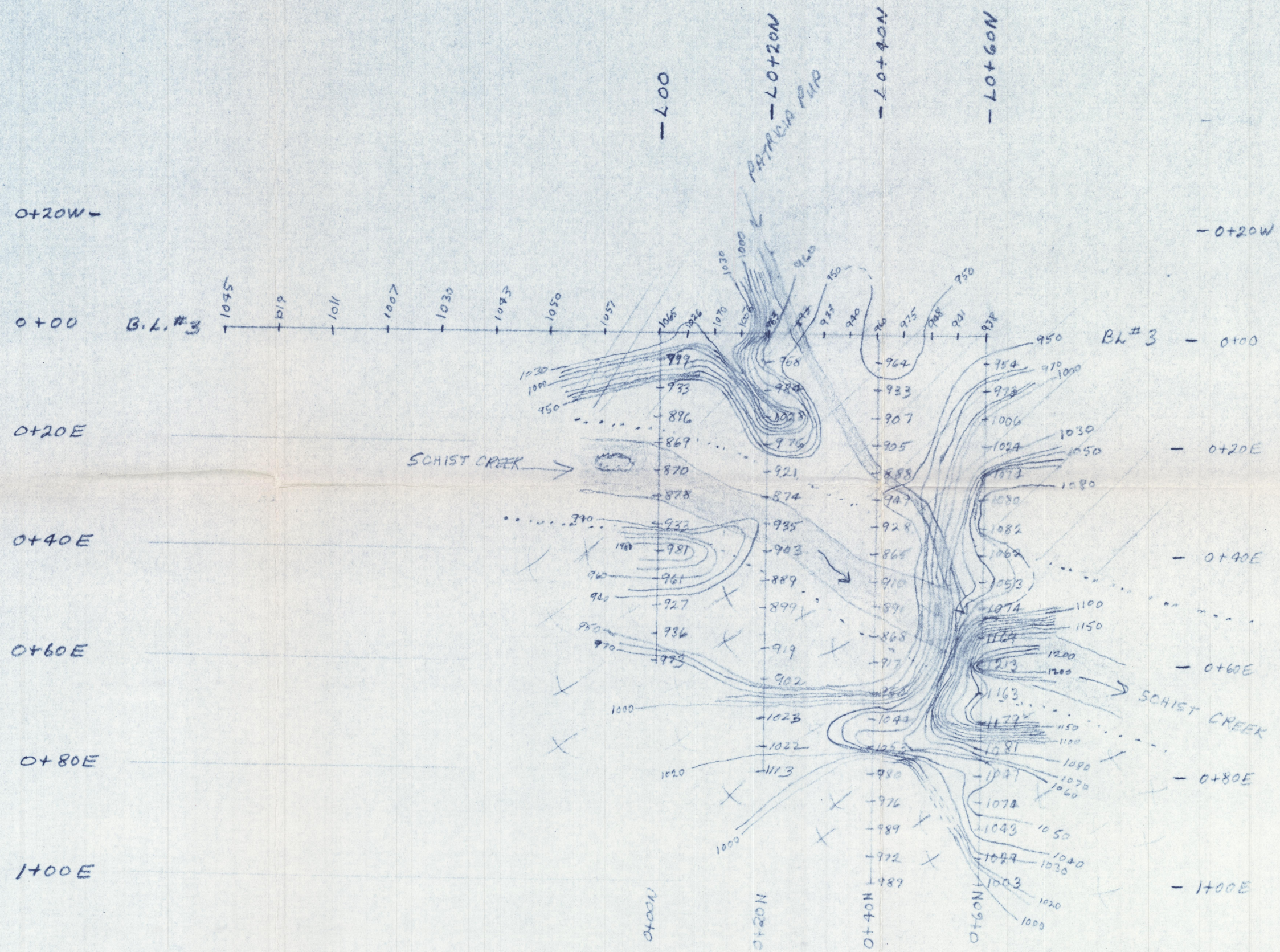
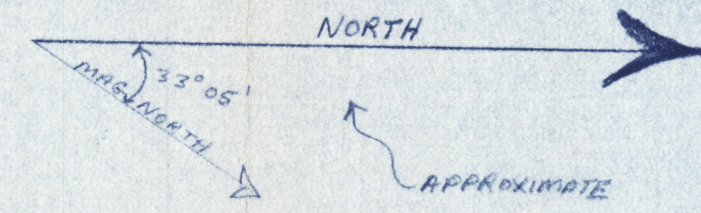


AREA 3 - SCALE 1 inch = 20 meters



**LEGEND**

- 950 MAG. CONTOURS - TOTAL FIELD REDUCED TO 3 OR 4 DIGITS  
e.g. 950 → 57,950
- 950 LINES (STATIONS MARKED ON RIBBONS)
- 20 TO 40 FT. HIGH BENCHES
- SLOPING (20-30%) VALLEY WALL

AREA 3 - BASE LINE #3  
 SCHIST (TRIB) CREEK  
 MAGNETOMETER SURVEY  
 PLACER CLAIM P11734 (GR. CERT. 329P)  
 DART PLACERS CO. LTD.  
 Scale: 1 inch = 20 meters  
 Contour Interval: 10 Gammas (γ)  
 Instrument: GeoMetrics Proton Mag.  
 MODEL 8816  
 Mag. - Surveyed & Drawn by Gary Lee  
 Line Cutting & Chaining by GORD MACCLOUD  
 DATE: NOV. 1983